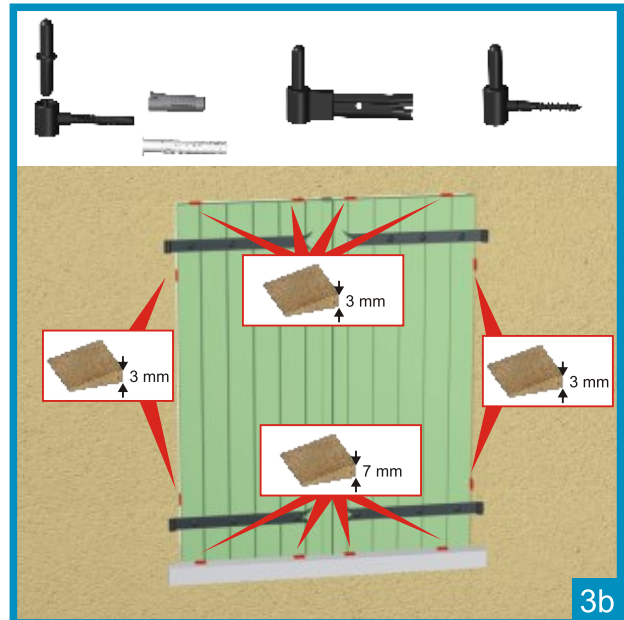
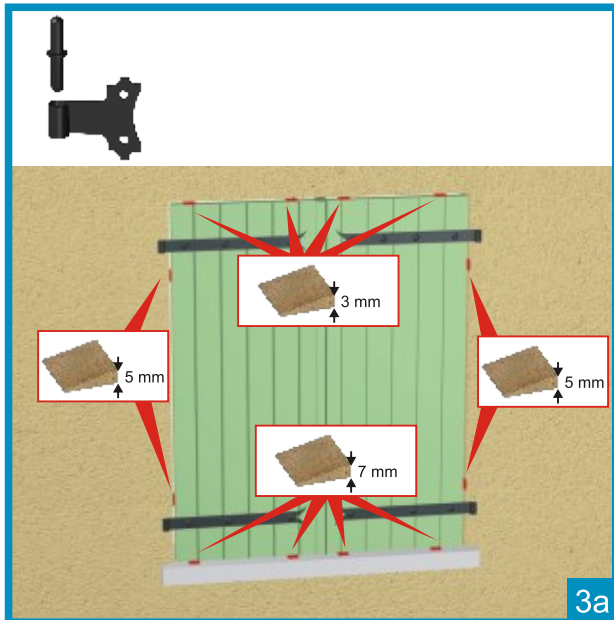
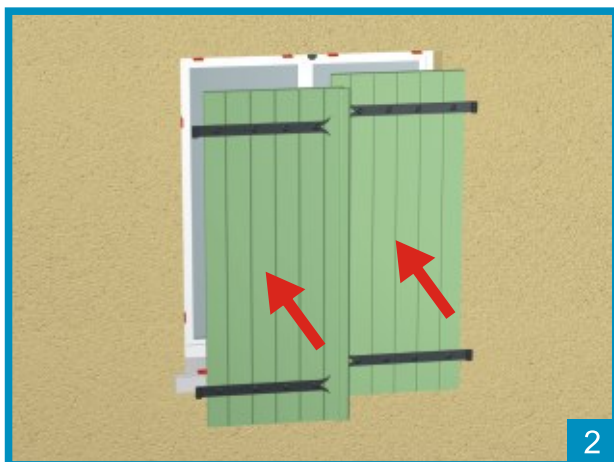
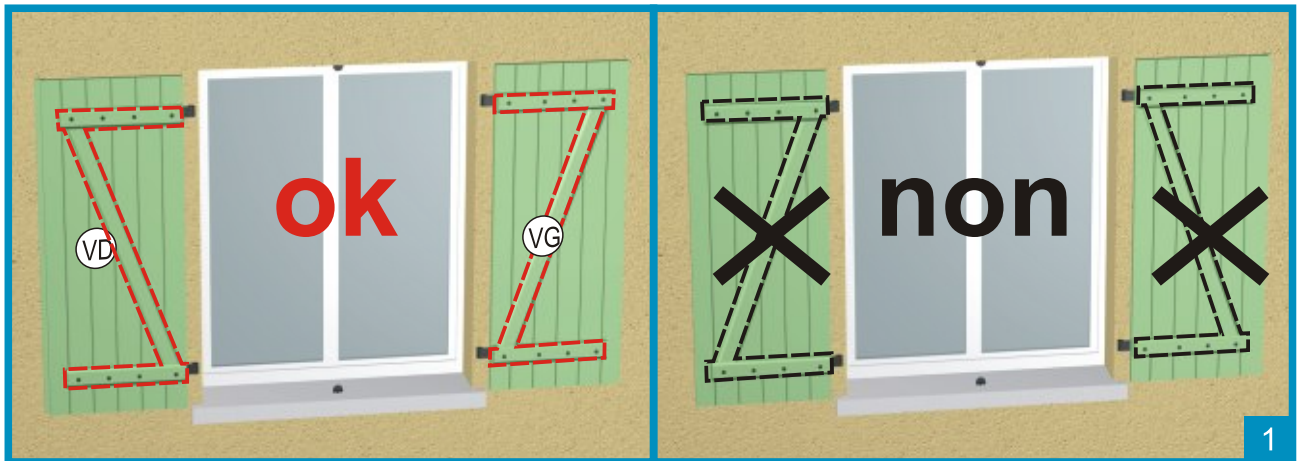


## Pose des gonds pour volets Ferrage posé

Mise en place des vantaux.....	page 2
Pose des gonds.....	page 3
- gonds à visser / chimiques / Presto.....	page 3
- gonds à sceller.....	page 4
- gonds à visser en tableau.....	page 5
Mise en place des butées.....	page 6
Pose des crochets de rappel pour volets repliables.....	page 6

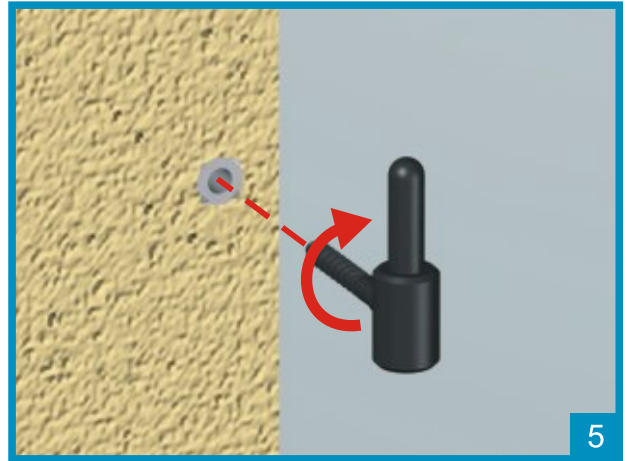
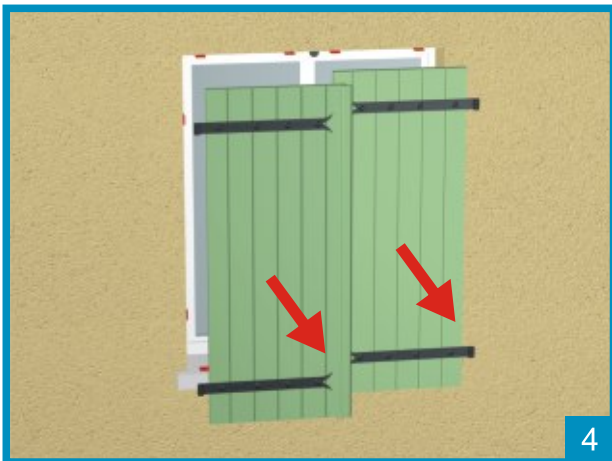
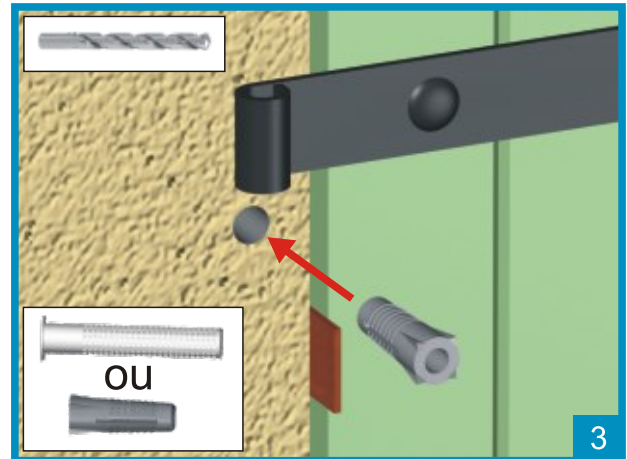
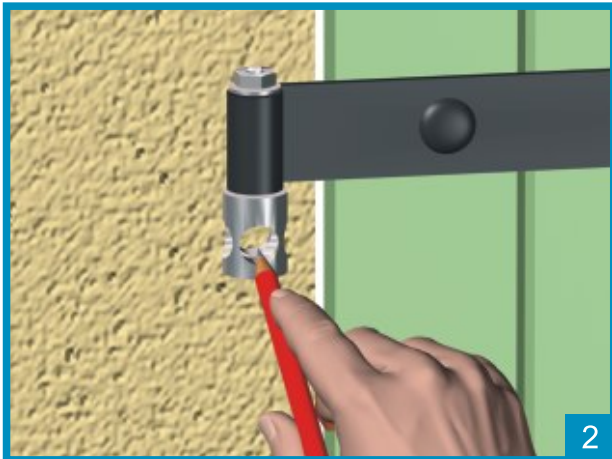
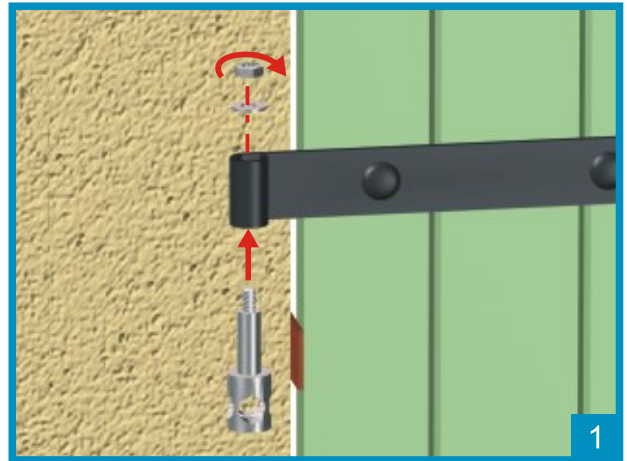


# Mise en place des vantaux



# Pose des gonds

Gonds à visser / chimiques / Presto

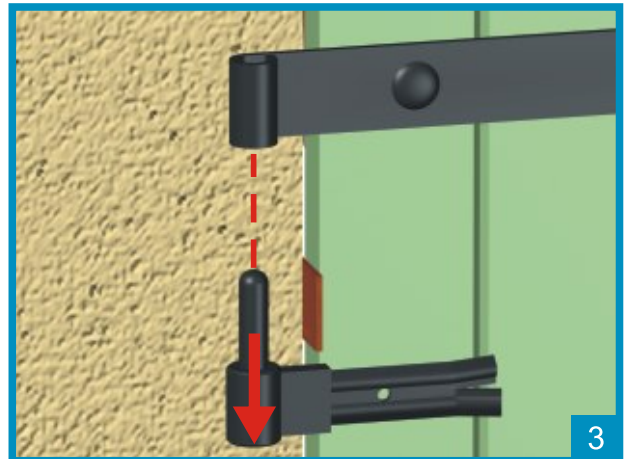
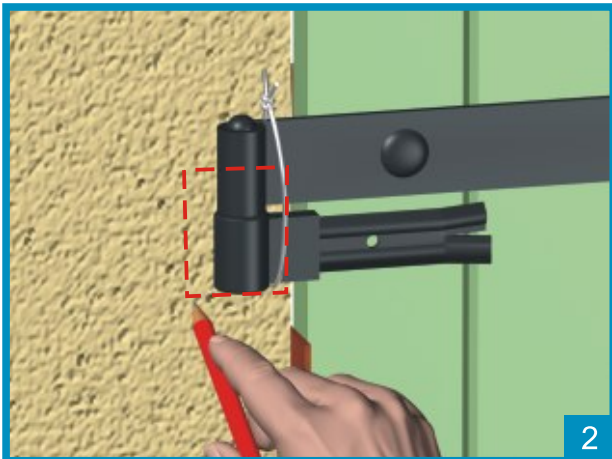
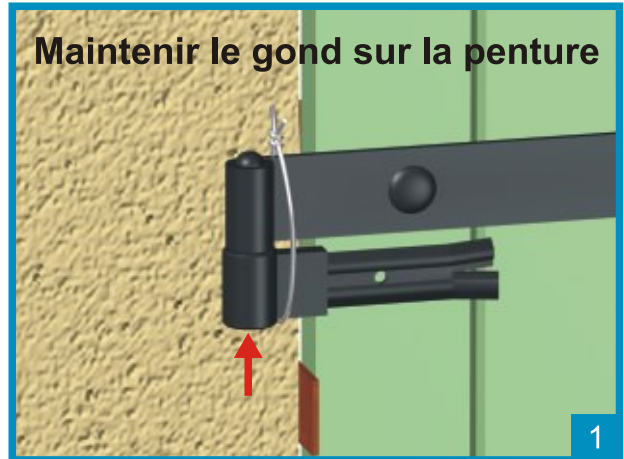




## Gonds à sceller



## Maintenir le gond sur la penture



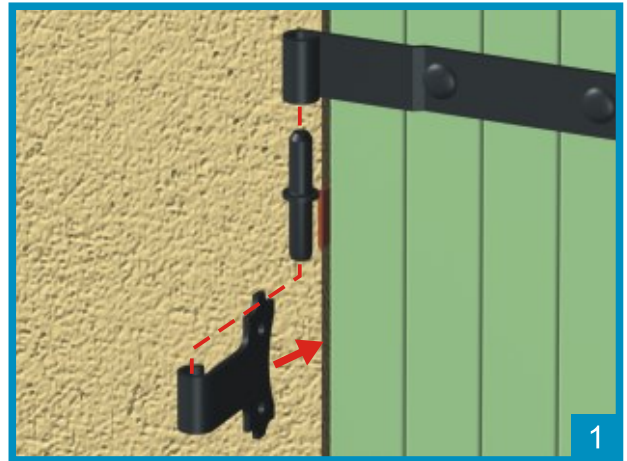
## volets simples



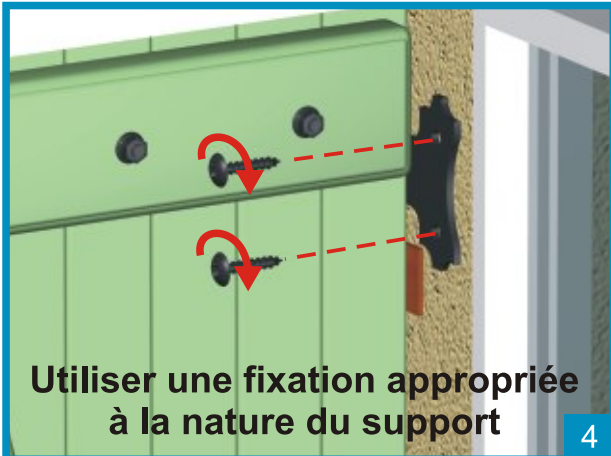
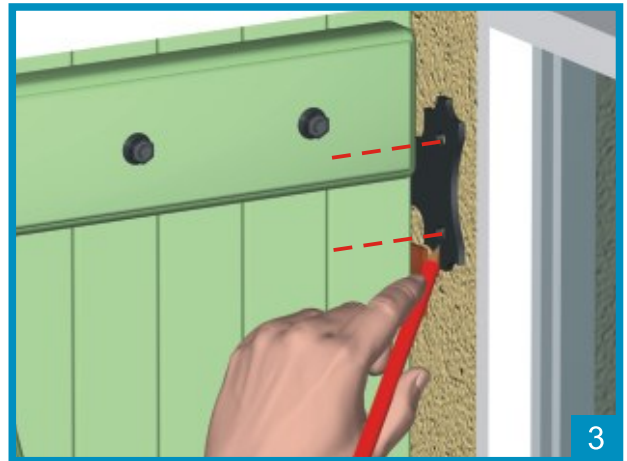
## volets repliables



## Gonds à visser en tableau



### Maintenir le gond sur la penture



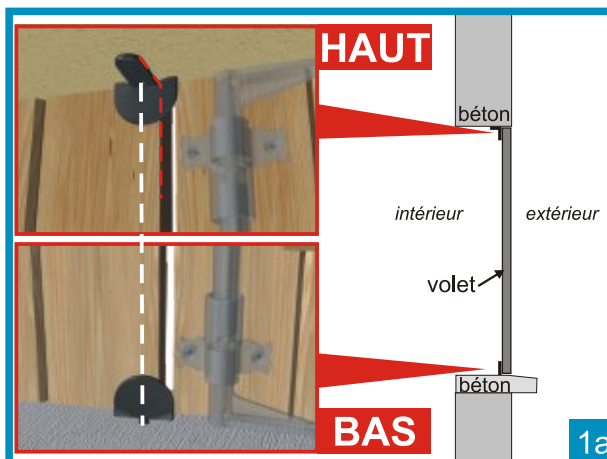
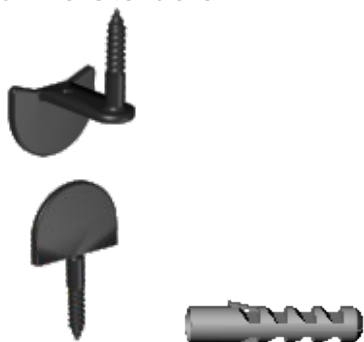
### volets simples



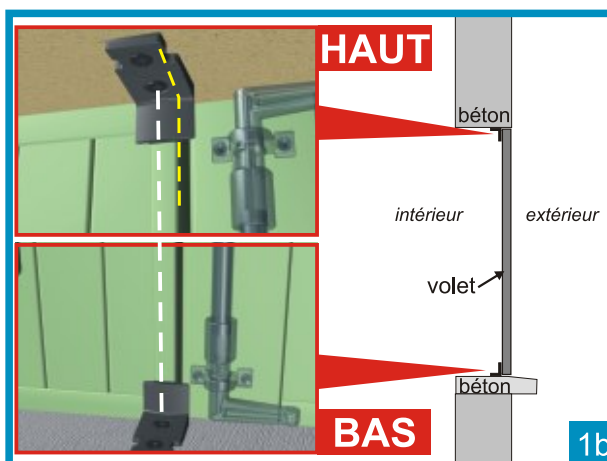
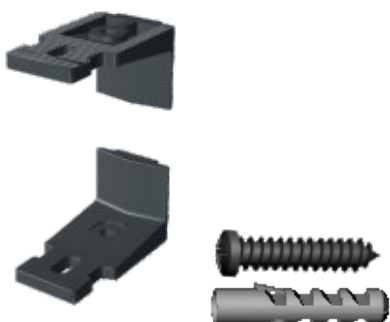
### volets repliables



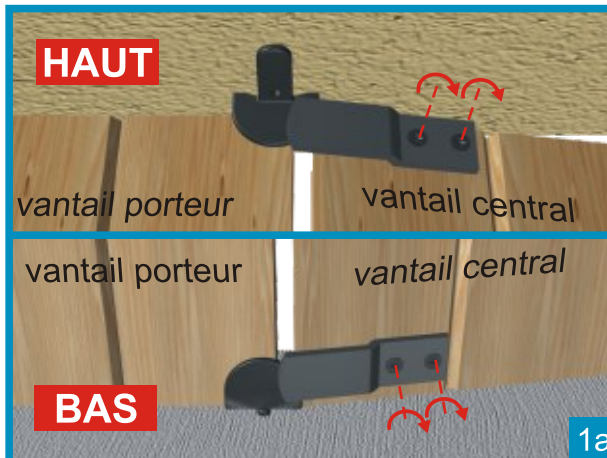
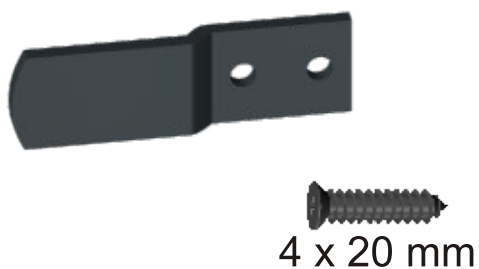
Mise en place des butées pour volets bois



Mise en place des butées pour volets PVC / Alu



Pose des crochets de rappel pour volets repliables bois



Cas d'un 2 vantaux à gauche

Pose des crochets de rappel pour volets repliables PVC / Alu

